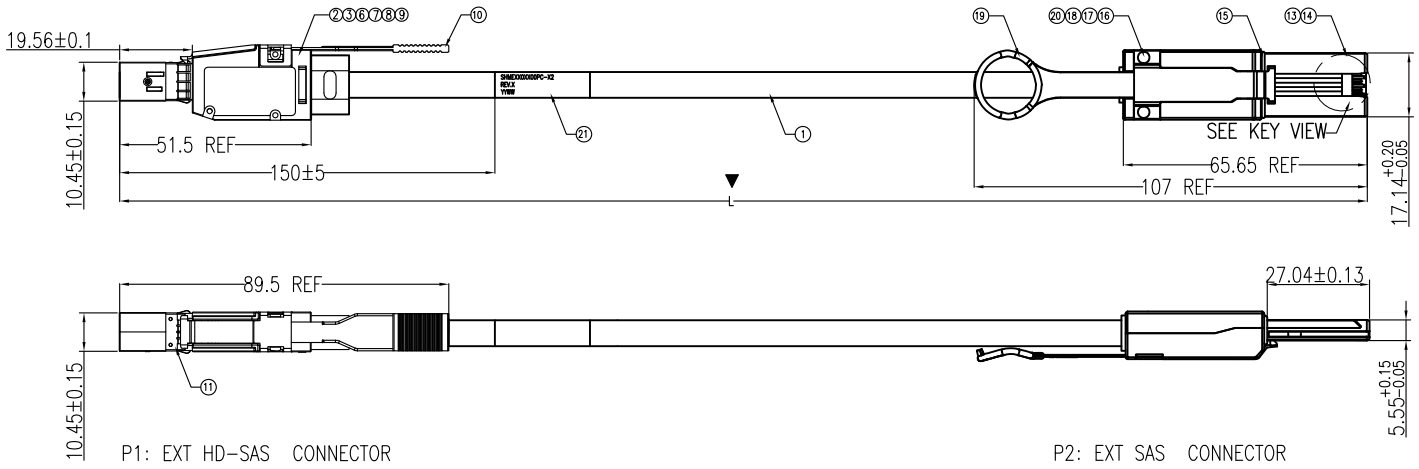


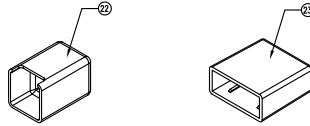
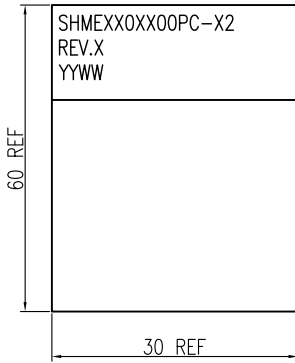
REV	DESCRIPTION	ECN NO.	NAME	
0	FIRST ISSUE		Fude Wang	2015-10-14

SALES DRAWING

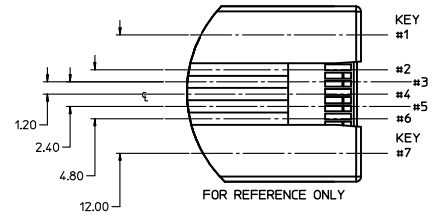
NOTICE:	ALL PARTS MUST MEET TO RoHS REQUIREMENTS
RoHS	<input checked="" type="checkbox"/>



LABEL INFORMATION



KEY DETAIL



NOTE:

- MATERIAL:
BACKSHELLS: ZINC ALLOY.
LATCH: STAINLESS STEEL.
PULL TAB: PA66, PANTONE 279C.
- 100% OPEN&SHORT WITH MISS WIRE TESTING;
- SI TEST: REFER TO ES-003
- THE NUMBER AND THE ALPHABET SHOULD BE SEPARATION WITH SPACE KEY WHEN LABEL PRINTED.
- THE MEASUREMENT MARKED ▼ MUST BE CHECKED BY QC/QA.
- RoHS REGULATION:
THIS CABLE ASSEMBLY PASSED "RoHS" COMPLIANT.
- CABLE ASSEMBLY MEET SAS 6Gbps AND SAS 2.1 SPEC.
- STRUCTURE DIMENSION ACCORDING TO SFF-8644 AND SFF-8088.

NO.	DESCRIPTION	Q.TY
23	DUST COVER FOR SFF-8088, PE, NATUAL	1
22	DUST COVER FOR SFF-8644, PE, NATUAL	1
21	ID LABEL, 30*40MM, WRAP ROUND CABLE	A/R
20	INNER MOLDING FOR EXT MINI-SAS.	A/R
19	PULL TAB FOR EXT MINI-SAS, PA66, BLUE.	1
18	LATCH FOR EXT MINI-SAS, STEEL S301.	1
17	SCREW FOR EXT MINI-SAS, S301.	2
16	REVIT FOR EXT MINI-SAS, ALUMINUM.	2
15	GASKET FOR EXT MINI-SAS, SHIELD FOAM.	1
14	BACK SHELL FOR EXT MINI-SAS, (Key: #2.4.6)	1
13	BOTTOM SHELL FOR EXT MINI-SAS.	1
12	PCB FOR EXT MINI-SAS, 28AWG, PLATING AU 30U".	1
11	EXT SAS HD EMI	1
10	PULL-TAB FOR EXT HD-SAS, PA66, BLUE.	1
9	LATCH FOR EXT HD-SAS, S301/4.	1
8	REVIT FOR EXT HD-SAS, ALUMINUM ALLOY.	3
7	CABLE SR FOR EXT HD-SAS, 1*8P, PVC, BLACK.	1
6	INNER MOLDING FOR EXT HD-SAS, PE, BLK.	1
5	PCB LOWER FOR EXT HD-SAS, Au30".	1
4	PCB UPPER FOR EXT HD-SAS, Au30".	1
3	RIGHT SHEEL FOR EXT HD-SAS, ZINE ALLOY, NI150u"	1
2	LEFT SHEEL FOR EXT HD-SAS, ZINE ALLOY, NI150u"	1
1	CABLE 8P*XXAWG CABLE, PVC,	A/R

产品信息表:

NO.	SLK PN	线径/AWG	长度 L/MM
1	SHME2801000PC-X2	28	1000±20
2	SHME2802000PC-X2	28	2000±30
3	SHME2803000PC-X2	28	3000±50
4	SHME2604000PC-X2	26	4000±50
5	SHME2605000PC-X2	26	5000±80
6	SHME2406000PC-X2	24	6000±80
7	SHME2407000PC-X2	24	7000±100
8	SHME2408000PC-X2	24	8000±100

CUSTOMER P/N. /		PART NO.		
UNIT	MM	SCALE	N/A	
		APPROVED		TITLE
		Billy Yan		
$\leq 0.5m \pm 30mm$ $\leq 4m \pm 50mm$ $\geq 4m \pm 80mm$		CHECKED		DRAWING NO.
		Maoqing		
		DRAWN		REV NO.
		Fude Wang		0
		DATE		Page
		2015-10-14		1/2

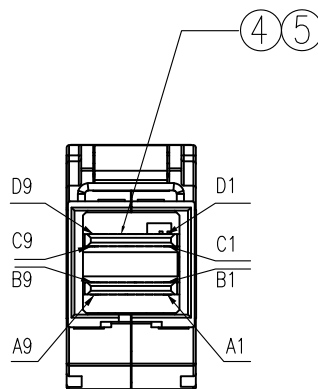
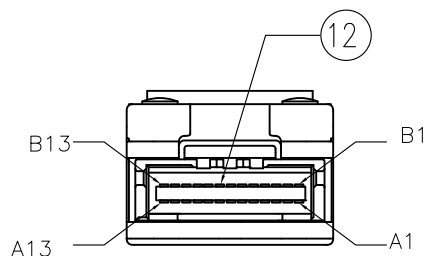
REV	DESCRIPTION	ECN NO.	NAME	
0	FIRST ISSUE		Fude Wang	2015-10-14

SALES DRAWING

NOTICE: ALL PARTS MUST MEET TO RoHS REQUIREMENTS

RoHS

WIRING CHART			
-P1-		-P2-	
GND	D9	----- A1	GND
Tx2-	D8	—————▷ A9	Rx2-
Tx2+	D7	—————▷ A8	Rx2+
GND	D6	----- A7	GND
Tx0-	D5	—————▷ A3	Rx0-
Tx0+	D4	—————▷ A2	Rx0+
GND	D3		
Vman	D2	EEPROM	
Vact	D1		
SCL	C1		
SDA	C2		
GND	C3		A4
Tx1+	C4	—————▷ A5	Rx1+
Tx1-	C5	—————▷ A6	Rx1-
GND	C6	----- A10	GND
Tx3+	C7	—————▷ A11	Rx3+
Tx3-	C8	—————▷ A12	Rx3-
GND	C9	----- A13	GND
GND	B9	----- B1	GND
Rx2-	B8	◀----- B9	Tx2-
Rx2+	B7	◀----- B8	Tx2+
GND	B6	----- B7	GND
Rx0-	B5	◀----- B3	Tx0-
Rx0+	B4	◀----- B2	Tx0+
GND	B3	NC	
ModPrsl	B2	NC	
Vact	B1	NC	
Rev	A1	NC	
IntL	A2	NC	
GND	A3	----- B4	GND
Rx1+	A4	◀----- B5	Tx1+
Rx1-	A5	◀----- B6	Tx1-
GND	A6	----- B10	GND
Rx3+	A7	◀----- B11	Tx3+
Rx3-	A8	◀----- B12	Tx3-
GND	A9	----- B13	GND



CUSTOMER P/N. /		PART NO. SHMEXX0XX00PC-X2		SLK —SUPERLINK—
UNIT	MM	SCALE	N/A	
		APPROVED Billy Yan		TITLE EXT HD-SAS CABLE ASSEMBLY SFF-8644 TO SFF-8088 6G
		CHECKED MaoQing		DRAWING NO. SHMEXX0XX00PC-X2-XX
$\leq 0.5m \pm 30mm$ $\leq 4m \pm 50mm$ $\geq 4m \pm 80mm$		DRAWN Fude Wang		REV NO. 0
		DATE 2015-10-14		Page 2/2