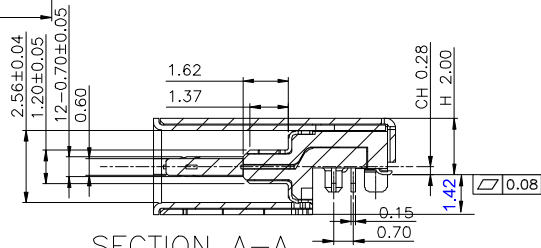
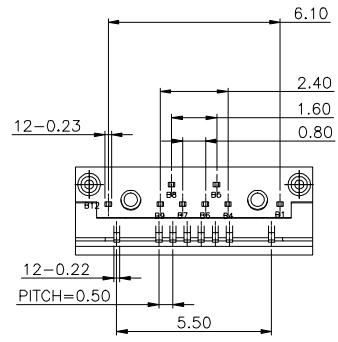
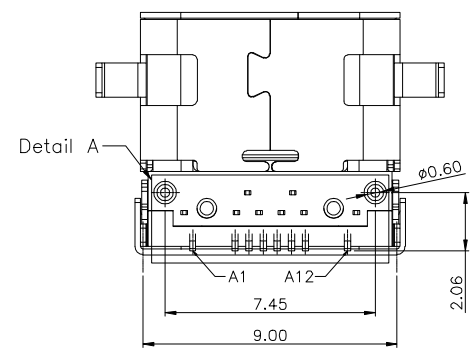
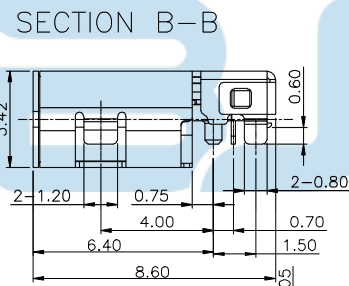
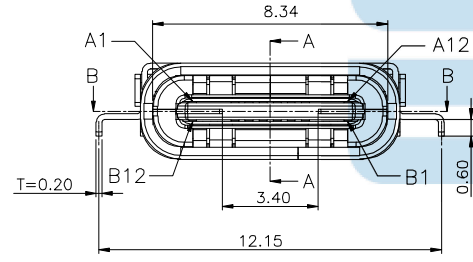
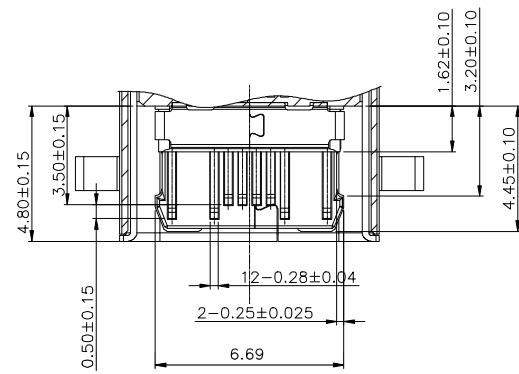
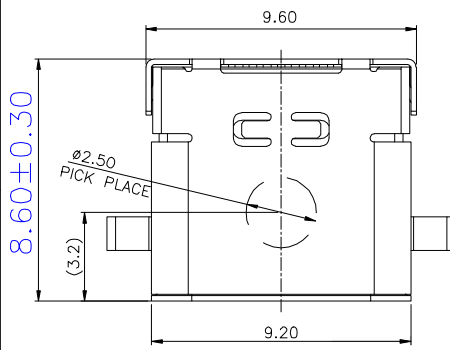


REV.	ECN. NO.	NAME	DATE
A	NEW		



- NOTES:
- MATERIAL:
MOLDING: LCP UL94 V-0
CONTACT: COPPER ALLOY.
GOLD PLATED Min ON CONTACT AREA, 100u"
Min TIN (LEAD FREE) ON SOLDER AREA,
SHELL: SUS304-H, T=0.30±0.03mm
50u" NICKEL PLATING OVER ALL.
SHILD: SUS304-H, T=0.12±0.03mm
 - MECHANICAL:
INSERTION: 5~20N.
EXTRACTION: 8~20N.
DURABILITY: 10000 CYCLES
 - ELECTRICAL:
CURRENT: 5A MIN FOR VBUS;
0.25A MIN FOR OTHER.
VOLTAGE: 20 V MAX
WITHSTANDING VOLTAGE: 100V AC.
CONTACT RESISTANCE: 40mΩ MAX.
INSULATION RESISTANCE: 100MΩ MIN.
 - ENVIRONMENTAL
TEMPERATURE RANGE -55°C ~ +85°C



TOLERANCE UNSPECIFIED	
.0	±0.50
.05	±0.35
.00	±0.25
.000	±0.15
ANGLE	±3.00°
CUSTOMER DRAWING	

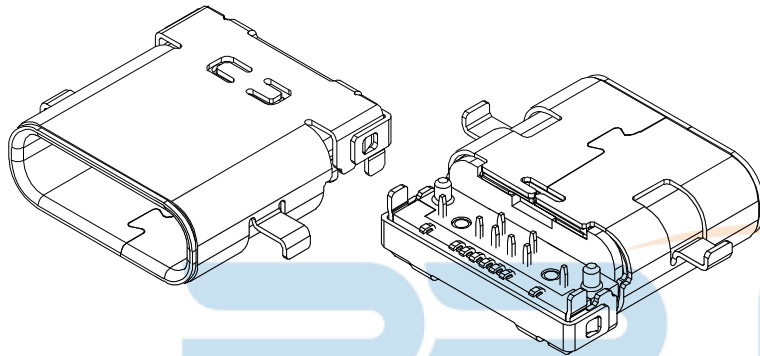
深圳市步步精科技有限公司

TITLE: TYPE-C 母座 16P沉板1.42 CH0.28 L=8.65双壳

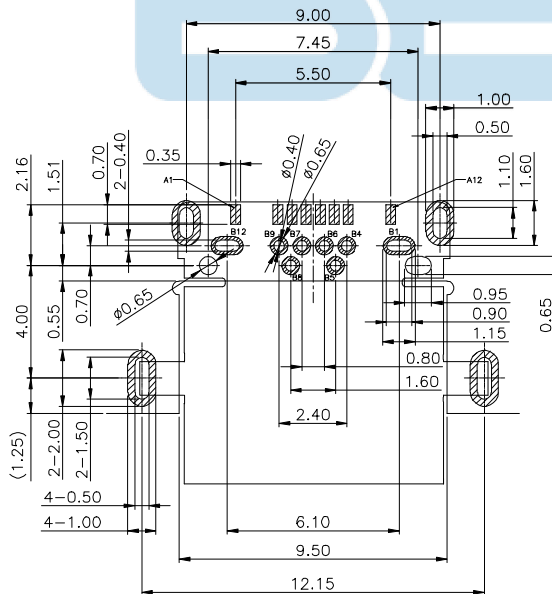
DRAWN BY:	HMY	SIZE:A4	UNIT:mm.	PART NO.	UC.01.31-16-0001
CHECKED BY:	LYX	SCALE: 1:1	PROJECTION	REV.: A	
APPROVED BY:	LJP	DWG. PATH	0285-1	SHEET: 1/4	



USB TYPE-C FULL-FEATURED RECEPTACLE INTERFACE PIN ASSIGNMENTS



PIN	Signal Name	Description	PIN	Signal Name	Description
A1	GND	Ground return	B12	GND	Ground return
A4	VBUS	Bus Power	B9	VBUS	Bus Power
A5	CC1	Configuration Channel	B8	SBU2	Sideband Use (SBU)
A6	Dp1	Positive half of the USB 2.0 differential pair-Position 1	B7	Dn2	Negative half of the USB 2.0 differential pair-Position 2
A7	Dn1	Negative half of the USB 2.0 differential pair-Position 1	B6	Dp2	Positive half of the USB 2.0 differential pair-Position 2
A8	SBU1	Sideband Use (SBU)	B5	CC2	Configuration Channel
A9	VBUS	Bus Power	B4	VBUS	Bus Power
A12	GND	Ground return	B1	GND	Ground return



RECOMMEND P.C.B LAYOUT (COMPONENT SIDE)

TOLERANCE FOR PCB LAYOUT IS ± 0.05

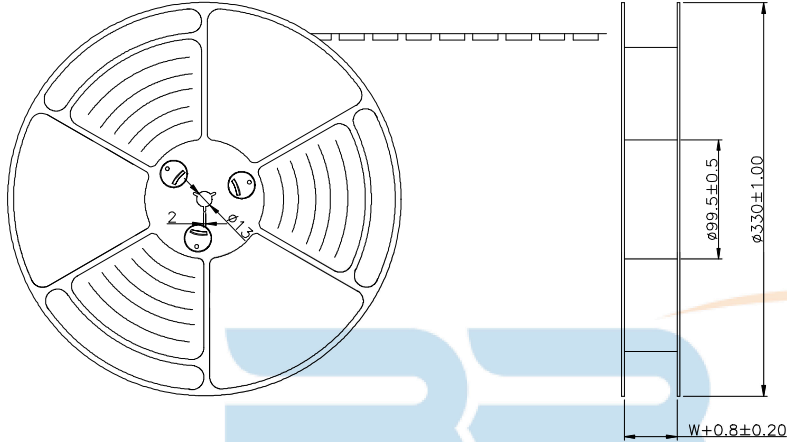
KEEP OUT AREA



TOLERANCE UNSPECIFIED		深圳市步步精科技有限公司	
.	± 0.50	TITLE: TYPE-C 母座 16P沉板1.42 CH0.28 L=8.65双壳	
.0	± 0.35	SIZE: A4	UNIT: mm.
.00	± 0.25	PART NO. UC.01.31-16-0001	
.000	± 0.15	CHECKED BY: LYX	SCALE: 1:1
ANGLE	$\pm 3.00^\circ$	APPROVED BY: LJP	DWG. PATH
CUSTOMER DRAWING		PROJECTION	REV.: A
			SHEET: 2/4

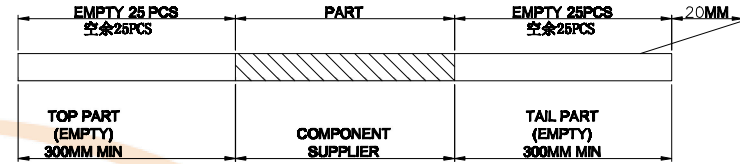


出料方向
PULL OUT DIRECTEON

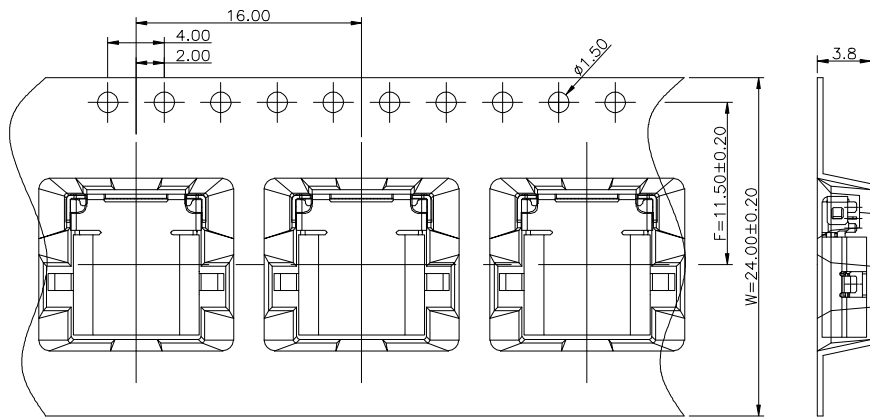


NOTES

1. 帶子引導長度
LEAD TAPE LENGTH
出料方向
PULL OUT DIRECTEON



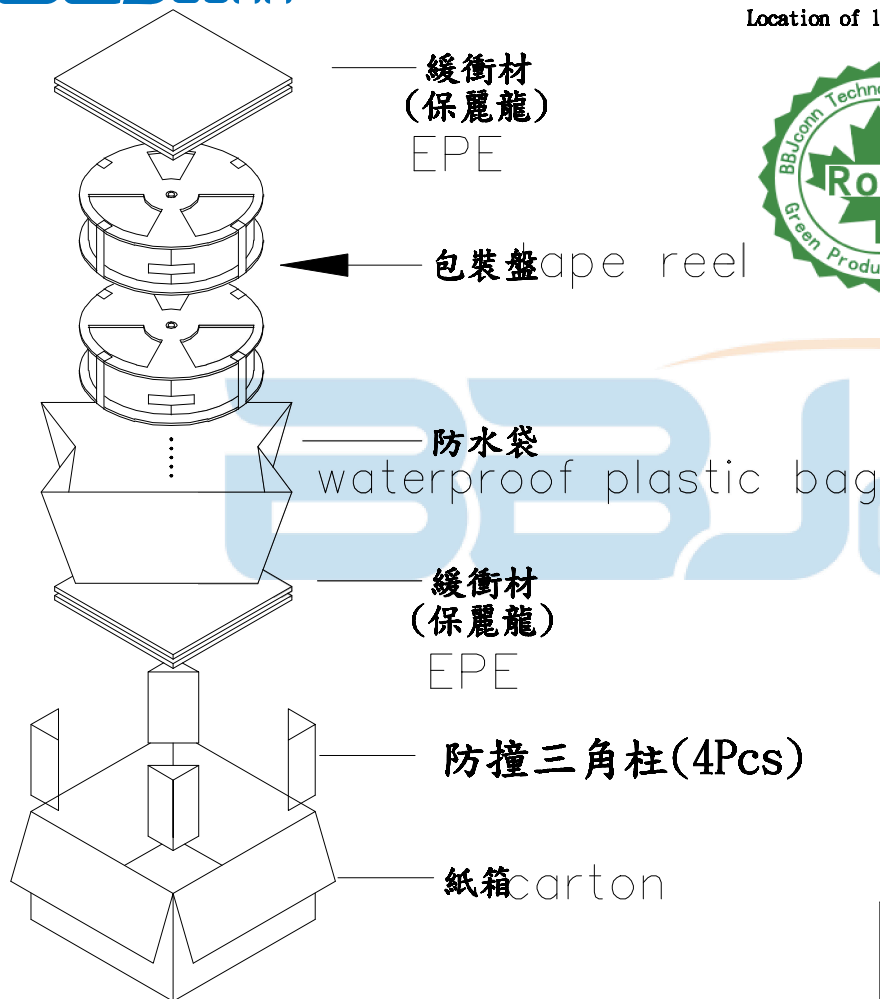
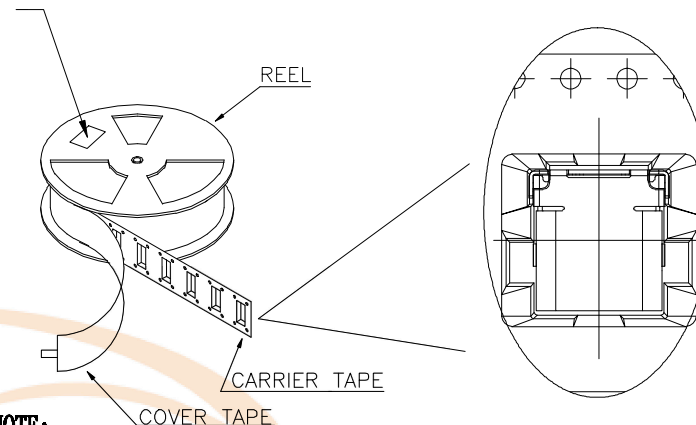
2. 出貨運輸過程中一定要注意：
THIS REQUIREMENT SHOULD BE APPLIED AT SHIPMENT：
卷帶在運輸過程中不能散開
PEELING OFF SHOULD NOT BE ALLOWED DURING TRANSPORTATION



TOLERANCE UNSPECIFIED		深圳市步步精科技有限公司			
.	±0.50	TITLE:			
.0	±0.35	TYPE-C 母座 16P沉板1.42 CH0.28 L=8.65双壳			
.00	±0.25	DRAWN BY:	SIZE:A4	UNIT:mm.	PART NO. UC.01.31-16-0001
.000	±0.15	CHECKED BY:	SCALE: 1:1	PROJECTION	REV.: A
ANGLE	±3.00°	APPROVED BY:	DWG. PATH	0285-1	SHEET:3/4
CUSTOMER DRAWING					



at small positioning hole of the carrier tape side).
 標籤黏貼處 (朝捲裝包材的小定位孔一側)
 Location of label sticking (label)



NOTE:

1. 每捲包裝數量及每箱裝箱數量如左下表格。
Packing q'ty of each reel & carton as below table shown.
2. 以上膠帶覆蓋下包裝帶經包裝機熱熔包裝
Use cover tape to cover and hot melt machine to seal up.
3. 每個紙箱放2個珍珠棉
Every carton use 2pcs EPE.
4. 將裝滿產品的卷盤放入紙箱并以膠帶封口
Put reels in the carton and use adhesive tape to seal up.



TOLERANCE UNSPECIFIED	
.	±0.50
.0	±0.35
.00	±0.25
.000	±0.15
ANGLE	±3.00°
CUSTOMER DRAWING	

深圳市步步精科技有限公司

TITLE: TYPE-C 母座 16P沉板1.42 CH0.28 L=8.65双壳

DRAWN BY:	HMY	SIZE:A4	UNIT:mm	PART NO.	UC.01.31-16-0001
CHECKED BY:	LYX	SCALE: 1:1	PROJECTION		REV.: A
APPROVED BY:	LJP	DWG. PATH	0285-1	SHEET:4/4	

產品料號 (PRODUCT No.)	包裝容量 (PACKING CAPACITY)			重量 WEIGHT (KG)		
	PCS/REEL	REELS/CARTON	PCS/CARTON	N.W./PCS	N.W./BOX	G.W./BOX
	1000	8	8000			

1 2 3 4 5 6 7 8