

### Specifications

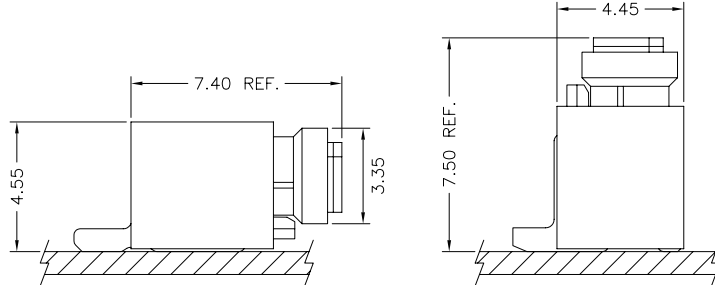
Current Rating: 1.5A~3A AC,DC(Per Pin)  
 Voltage Rating: 350V AC,DC(Per Pin)  
 Temperature Range: -25°C ~ +85°C  
 Contact Resistance: 20mΩ Max.  
 Insulation Resistance: 1000MΩ Min.  
 Withstanding Voltage: 500V AC/minute  
 \*Contact H.R for Details\*

A  
B  
C  
F

### Standards



### Assembly Layout



### Ordering Code

① ② ③ ④  
**A1501-X-X-X**

- ① Series No.
- ② Plating Code: T=Tin-Plated, G=Gold-Plated
- ③ Material: P=Phosphor Bronze
- ④ E=Stamping Before Plating

① ② ③ ④  
**A1501-XX-X-XP**

- ① Series No.
- ② Connector Type: WV=Vertical, WR=Right Angle
- ③ Mounting Type: S=SMT
- ④ No. of Circuits

① ② ③  
**A1501-X-XP**

- ① Series No.
- ② Housing Type: H=Housing
- ③ No. of Circuits



# A1501 SERIES

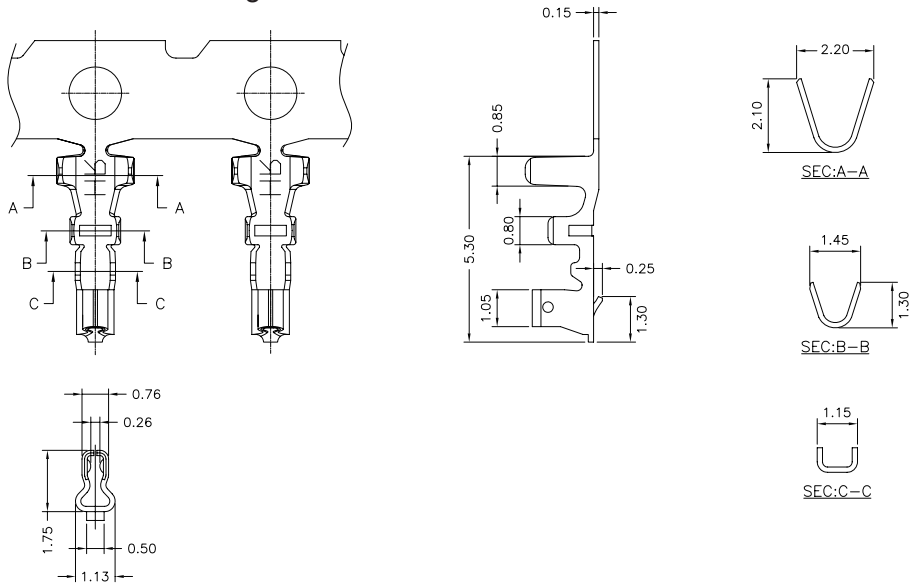
1.50mm Pitch Wire to Board Connector

## A 1501-XXX

1.50mm Pitch Crimp Terminal

### Reference Information:

\*Used in H.R A1501 Series Housing



Ordering Information & Specifications:

Unit:mm

Part No.	Wire Range	Insulation O.D.	Material	Finish	Qty/Reel
A1501-TPE-A	AWG#24-#28	1.10mm(Max)	Phosphor Bronze	Tin-Plated	10,000Pcs
A1501-GPE-A	AWG#24-#28	1.10mm(Max)	Phosphor Bronze	Gold-Plated	10,000Pcs

Note:E-Stamping Before Plating

## A 1501H

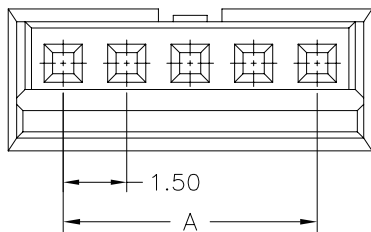
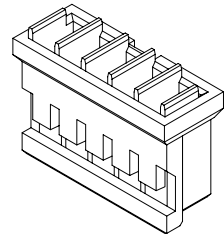
1.50mm Pitch Housing

### Reference Information:

\*Material: Thermoplastic

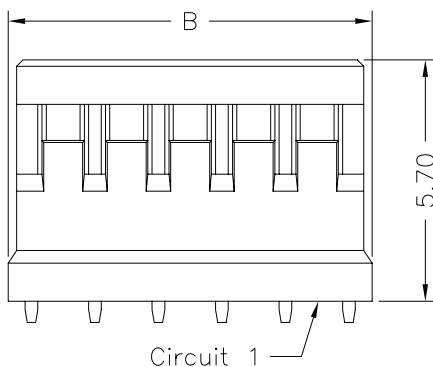
\*Suitable H.R A1501 Series Terminal

\*Mates with H.R A1501 Series Wafer



A1501H-XP X X X XX X XX X  
① ② ③ ④ ⑤ ⑥ ⑦

- ① Halogen Free or Not
- ② Material
- ③ Color
- ④ Plating Code for Contacts
- ⑤ Plating Code
- ⑥ Option Code
- ⑦ Packing Code



Circuit 1

Dimensions:

Circuit No.	Dimensions	
	A	B
02	1.50	4.10
03	3.00	5.60
04	4.50	7.10
05	6.00	8.60
06	7.50	10.10
07	9.00	11.60
08	10.50	13.10
09	12.00	14.60
10	13.50	16.10
11	15.00	17.60
12	16.50	19.10
13	18.00	20.60
14	19.50	22.10
15	21.00	23.60

Unit:mm



### A1501WV-S

1.50mm Pitch 180° Wafer - SMT Type

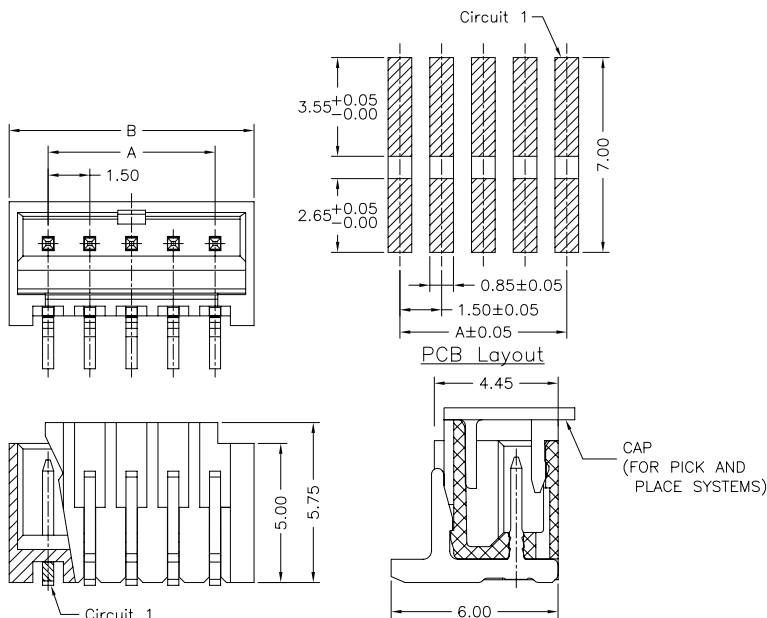
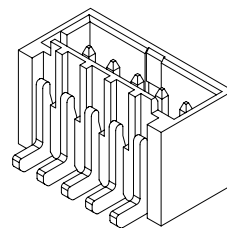
#### Reference Information:

- \*Material: Pin: Copper Alloy  
Wafer: Thermoplastic  
Cap: Thermoplastic

\*Mates with H.R A1501 Series Housing

A1501WV-S-XP	X	X	X	XX	X	XX	X
	①	②	③	④	⑤	⑥	⑦

- ① Halogen Free or Not
- ② Material
- ③ Color
- ④ Plating Code for Contacts
- ⑤ Plating Code
- ⑥ Option Code
- ⑦ Packing Code



#### Dimensions:

Circuit No.	Dimensions	
	A	B
02	1.50	4.30
03	3.00	5.80
04	4.50	7.30
05	6.00	8.80
06	7.50	10.30
07	9.00	11.80
08	10.50	13.30
09	12.00	14.80
10	13.50	16.30
11	15.00	17.80
12	16.50	19.30
13	18.00	20.80
14	19.50	22.30
15	21.00	23.80

Unit:mm

### A1501WR-S

1.50mm Pitch 90° Wafer - SMT Type

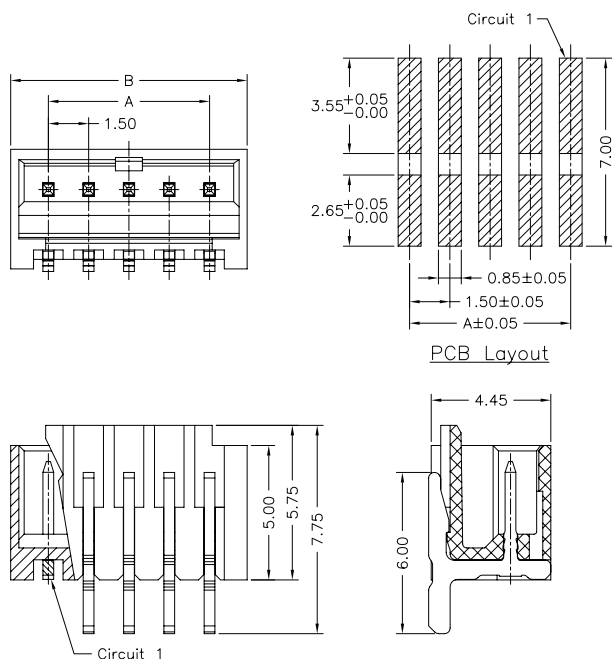
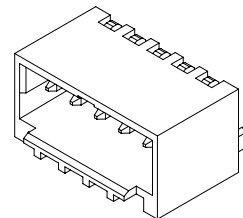
#### Reference Information:

- \*Material: Pin: Copper Alloy  
Wafer: Thermoplastic

\*Mates with H.R A1501 Series Housing

A1501WR-S-XP	X	X	X	XX	X	XX	X
	①	②	③	④	⑤	⑥	⑦

- ① Halogen Free or Not
- ② Material
- ③ Color
- ④ Plating Code for Contacts
- ⑤ Plating Code
- ⑥ Option Code
- ⑦ Packing Code



#### Dimensions:

Circuit No.	Dimensions	
	A	B
02	1.50	4.30
03	3.00	5.80
04	4.50	7.30
05	6.00	8.80
06	7.50	10.30
07	9.00	11.80
08	10.50	13.30
09	12.00	14.80
10	13.50	16.30
11	15.00	17.80
12	16.50	19.30
13	18.00	20.80
14	19.50	22.30
15	21.00	23.80

Unit:mm

A  
B  
C  
F