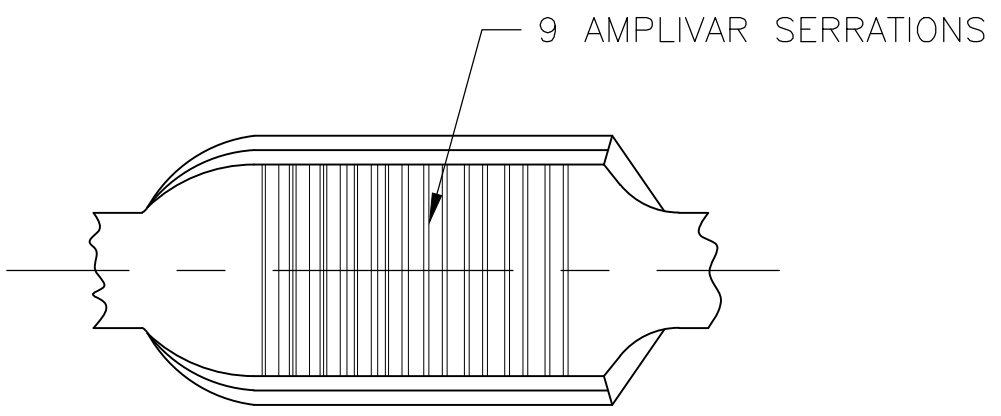
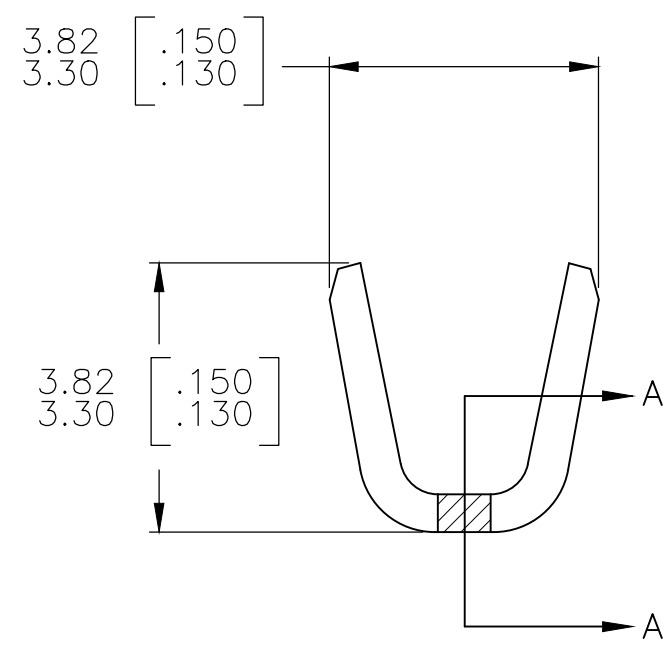
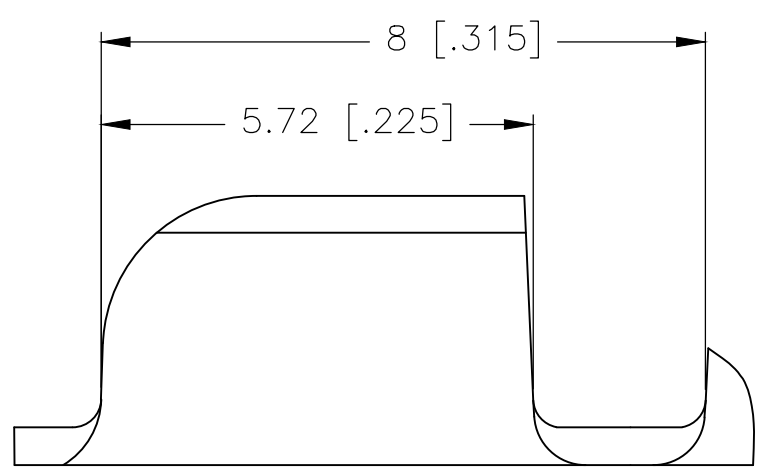


THIS DRAWING IS UNPUBLISHED. RELEASED FOR PUBLICATION  
 © COPYRIGHT - By - ALL RIGHTS RESERVED.

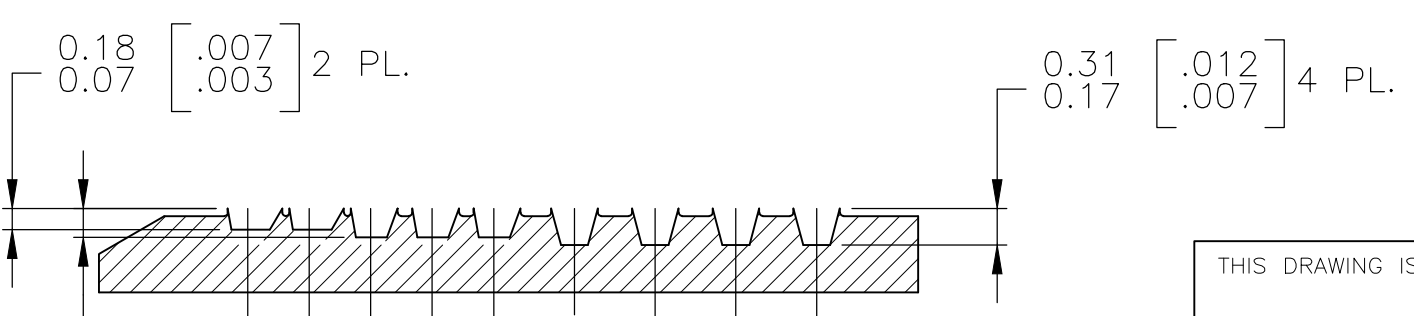
REVISIONS					
P	LTR	DESCRIPTION	DATE	DWN	APVD
	C5	REVISED PER ECO-18-007747	17MAY2018	RS	KR



1. PRODUCT PROVIDED IN STRIP FORM ON REELS; BREAKS MAY BE PRESENT.
2. DIMENSIONS IN BRACKETS ARE IN INCHES.
3. CRIMP WIDTH: .110 F (AMPLIVAR TYPE)  
 CRIMP HEIGHT ( $\pm 0.002$ ) = (TOTAL CMA + 9360) / 190,400  
 GENERAL APPLICATION GUIDELINES MUST BE FOLLOWED AS SPECIFIED IN CATALOG # 82221  
 FOR APPLICATOR INFORMATION CALL: 1-800-722-1111  
 FOR PRODUCT INFORMATION CALL: 1-800-522-6752



- $\triangle 4$  PART NUMBER 62304-1 NOT FOR USE WITH ALUMINUM MAGNET WIRE USE WITH COPPER MAGNET WIRE ONLY.
- $\triangle 5$  THIS PRODUCT IS APPROVED FOR USE AS A BUSSED TERMINATION PER BELOW. REFER TO APPLICATION SPEC 114-2003 REV F OR LATER FOR DETAILS  
 CRIMP WIDTH: .110 F (AMPLIVAR TYPE) ONLY  
 CRIMP HEIGHT ( $\pm 0.002$ ) = (TOTAL CMA + 9360) / 190,400  
 CMA RANGE: 600 - 3000  
 SAME MAGNET WIRE SIZE AND TYPE ONLY RECOMMENDED  
 CONTACT TE ENGINEERING FOR SPECIAL APPLICATIONS
- $\triangle 6$  PART NUMBER 62304-4 IS SUPPLIED WITH NO BREAKS IN THE CONTINUOUS REELING
- $\triangle 7$  PREPRODUCTION- FASR REQUIRED



SECTION A-A  
 SCALE 20:1

TIN	$\triangle 6 \triangle 7$ 62304-4
TIN	62304-2
NONE	$\triangle 4$ 62304-1
FINISH	PART NO.

THIS DRAWING IS A CONTROLLED DOCUMENT.		DWN RAGHAVENDRA 27JAN06	<b>STE</b> TE Connectivity Ltd.		
DIMENSIONS: mm [INCHES]		CHK G.D.PORTA			
TOLERANCES UNLESS OTHERWISE SPECIFIED:		APVD G.D.PORTA	PRODUCT SPEC		
0 PLC $\pm -$	1 PLC $\pm -$	108-32030		APPLICATION SPEC	
2 PLC $\pm 0.38[.015]$	3 PLC $\pm -$	114-2003 $\triangle 5$		SIZE	CAGE CODE
4 PLC $\pm -$	ANGLES $\pm 1^{\circ}$	WEIGHT 0.000000		DRAWING NO	RESTRICTED TO
MATERIAL REF 0.51 $\pm$ 0.03 [.020 $\pm$ .001] BRASS		FINISH SEE TABLE		A3 00779	C-62304
CUSTOMER DRAWING			SCALE 10:1	SHEET 1 OF 1	REV C5