

1	2	3	4
A	<b>版本号</b> Revision	<b>修订日期</b> DATE	<b>修订记录</b> Change Logs
	V1.0	2022-03-11	1. 初始版本 Initial version
B	V1.1	2022-03-29	1. 修改屏幕接口上的丝印错误,G6修改为E3,G13修改为D6。 Modify the screen interface silkscreen, G6 modified to E3, G13 modified to D6. 2. 修改CAN接口的端接电阻为0603封装。 Modify the CAN termination resistor to 0603 package. 3. SD卡 MOSI MISO 引脚, 增加10K上拉电阻。 SD card MOSI MISO pin, add 10K pull-up resistor. 4. 增加MCU 3.3V电源跳线: J4,J5。方便测量MCU工作电流。 Add MCU 3.3V power jumper: J4,J5 to measurement of MCU operating current. 5. 修改电源接口耐压标注丝印为: DC-IN MAX 14V。 Modify the power supply interface voltage label silkscreen to: DC-IN MAX 14V.
	V1.2	2022-05-11	1. 修改按键为直插型 Modify keys to DIP type. 2. 以太网晶振修改为50M 3225 Ethernet circuit crystal modified to 50M 3225 type. 3. 以太网部分, R23由0R修改为100R Ethernet circuit R23 resistor modified from 0R to 100R. 4. 增加5V、3.3V稳压输入端二极管, 防止回灌 Add schottky diodes before 5V and 3.3V regulator. 5. 去掉SWD接口上的22R电阻, 且VREF直接连到3.3V上 Remove 22R resistor from SWD interface, and connect VREF to 3.3V. 6. 修改SRAM型号为IS66WV51216BLL-55TLI (PSRAM) Modify SRAM Model to IS66WV51215BLL-55TLI(PSRAM). 7. 修改MCU E0 E1网络标号交叉的错误 Modify MCU E0 E1 net tie crossover error. 8. 增加QSPI Flash信号引脚上的33R串接电阻 ADD 33R resistor to QSPI Flash signal pins. 9. 修改右侧引脚引出排针的丝印错误。(I0、C1、C2、C3、RST) Modify the silkscreen error on the right row of pins (I0, C1, C2, C3, RST) 10. R67 R68 R69 R70 由1K修改为100K Modify R67 R68 R69 R70 from 1K to 100K. 11. 交叉JTAG接口上的UART B6 B7 Crossover the UART pin B6 B7 at JTAG interface.
C			
D	<p style="text-align: center;">本公司致力于产品的不断改善和功能升级, 内容如有改动, 恕不另行通知。 版权所有, 保留一切权利。 Our company is committed to improvement and functional upgrade of our products, and the content is subject to change without notice. All rights reserved.</p> <p style="text-align: center;">在此文件中, 仅以版本号前两位(发行版), 划分版本之间的区别。 In this document, only the first two digits of the version number (release version) are used to delineate the difference between versions</p>		
		<b>Title: PLUS-F5270</b> <b>Subtitle: Revision</b>	
		<b>Revision: V1.2.1.6</b>	
1	2	3	4

1

2

3

4

A

A

B

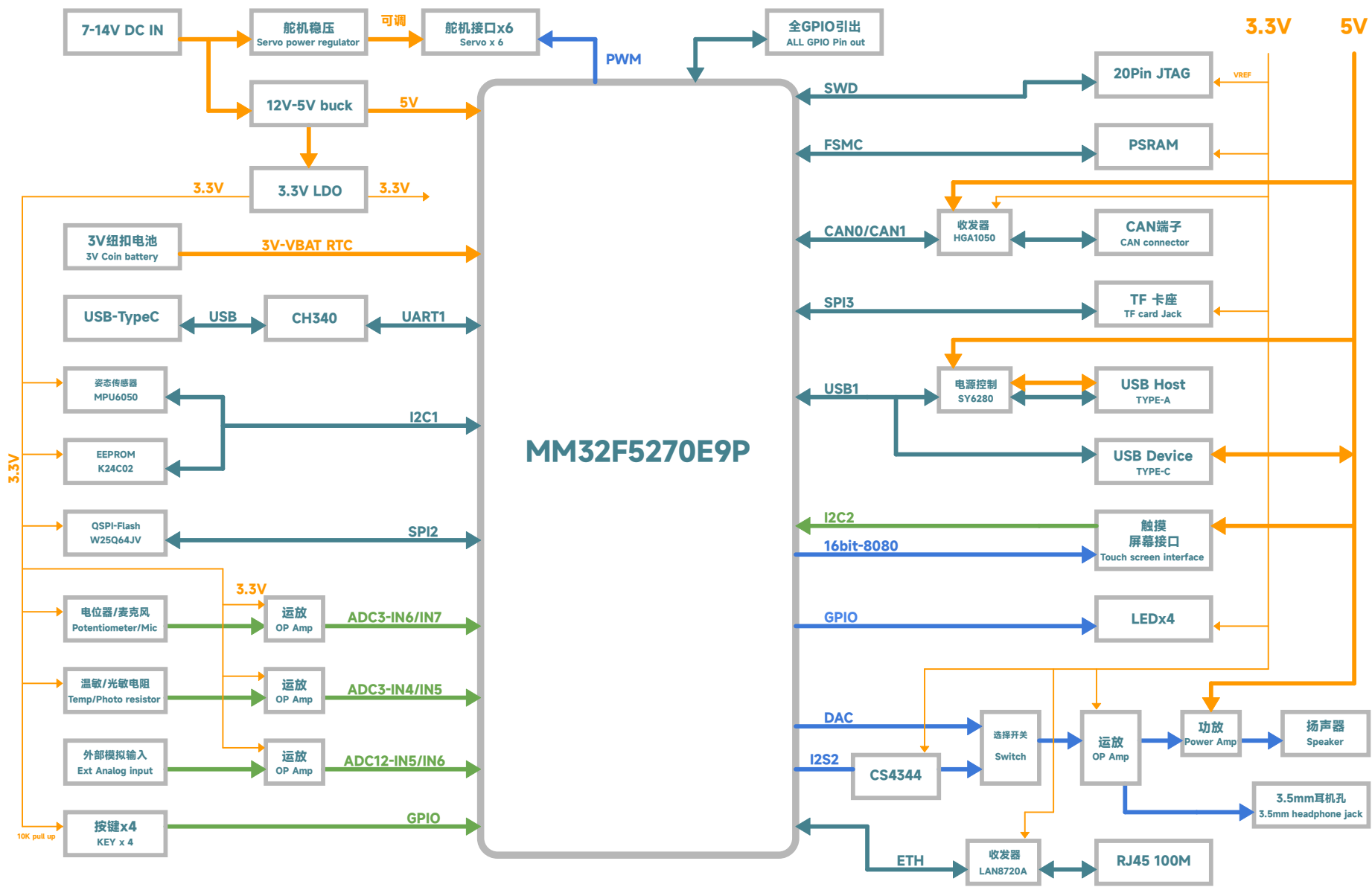
B

C

C

D

D



MM32F5270E9P

图例:  
Figure legend



红色字体: 需要注意/未确定条目  
RED TEXT: Needs attention / unconfirm item.

Title: PLUS-F5270

Subtitle: BlockDiagram

Revision: V1.2.1.6

1

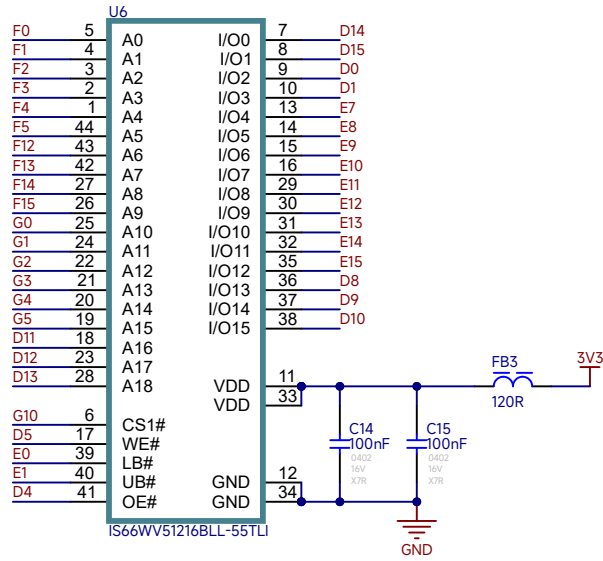
2

3

4



# PSRAM

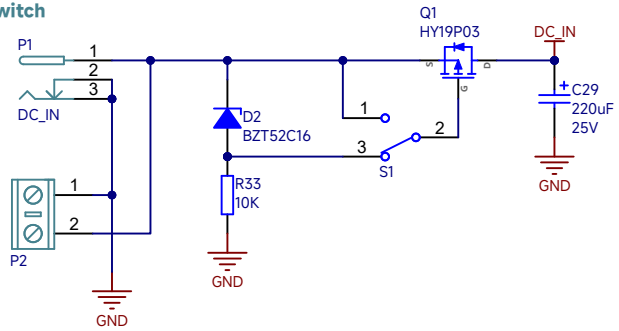


Title: PLUS-F5270

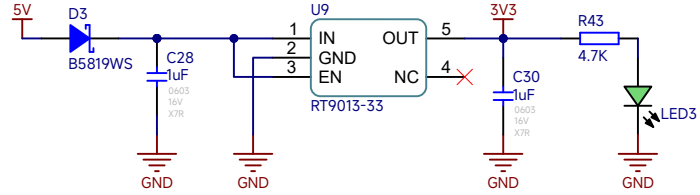
Subtitle: SRAM

Revision: V1.2.1.6

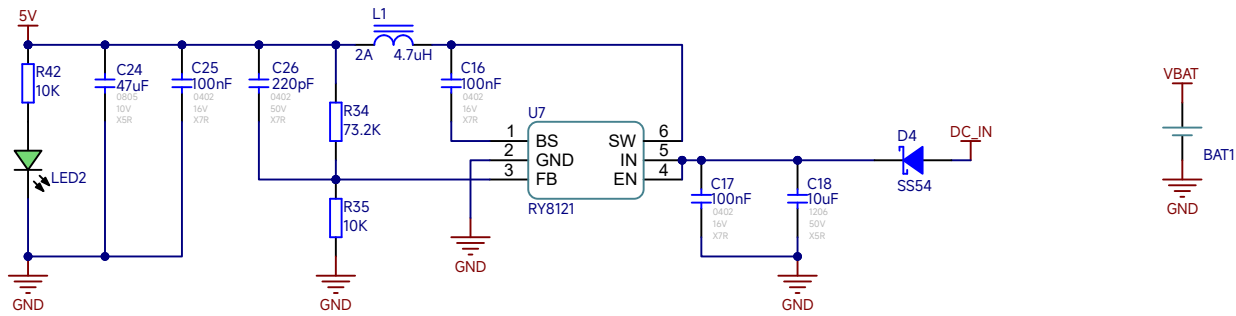
## 电源开关 Power Switch



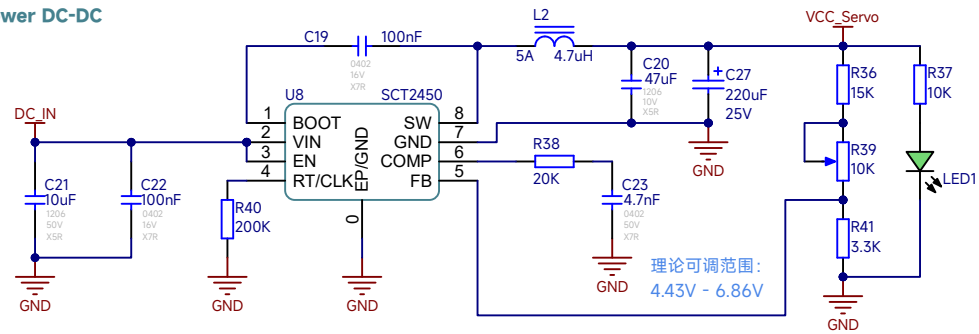
## 3.3V LDO



## 5V DCDC



## 舵机电源 DCDC Servo Power DC-DC



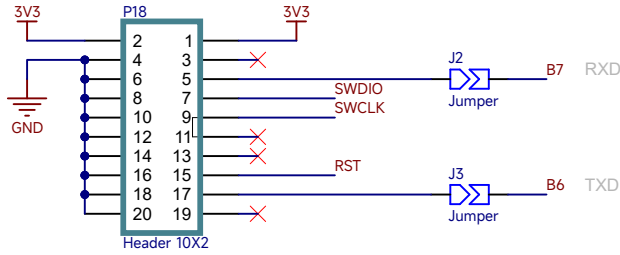
Title: PLUS-F5270

Subtitle: VRM

Revision: V1.2.1.6

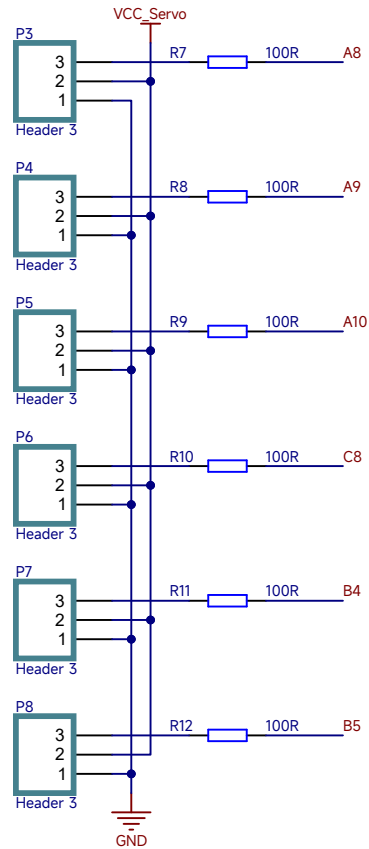
## SWD调试接口

### SWD Debug port



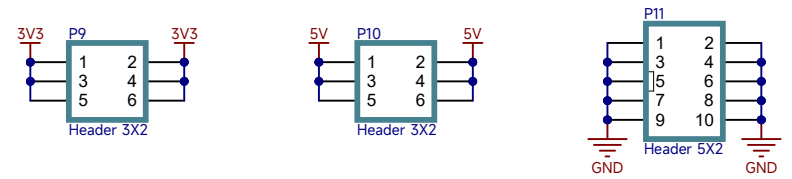
## 舵机接口

### Servo interface



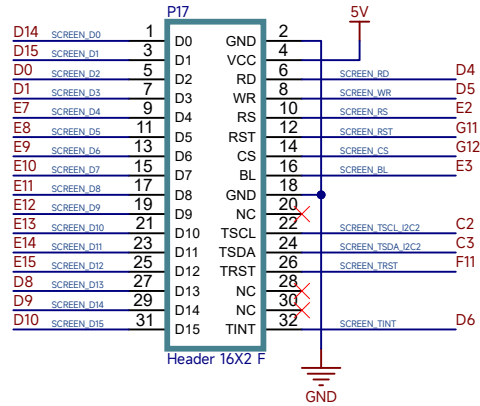
## 电源拓展接口

### Power extension interface



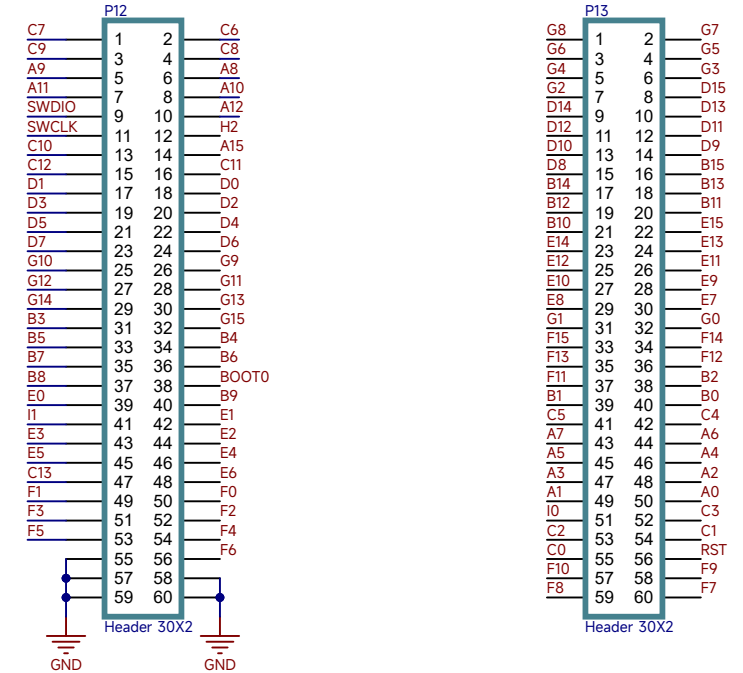
## 屏幕接口

### Screen Interface



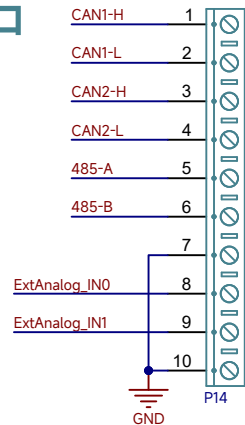
## GPIO引出接口

### GPIO pin out interface



## CAN&485&ADC接口

### CAN & RS485 & EXT-ADC Interface



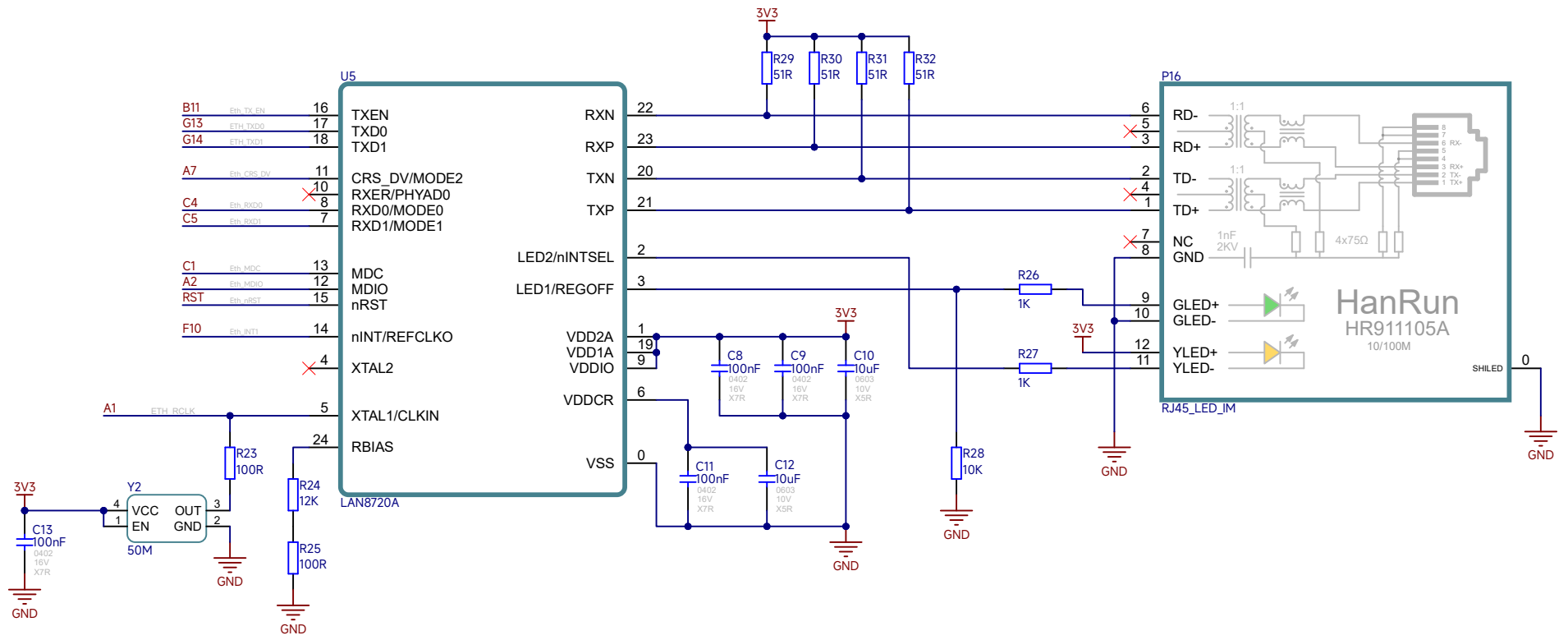
Title: PLUS-F5270

Subtitle: Interface

Revision: V1.2.1.6

# 以太网接口

Ethernet interface

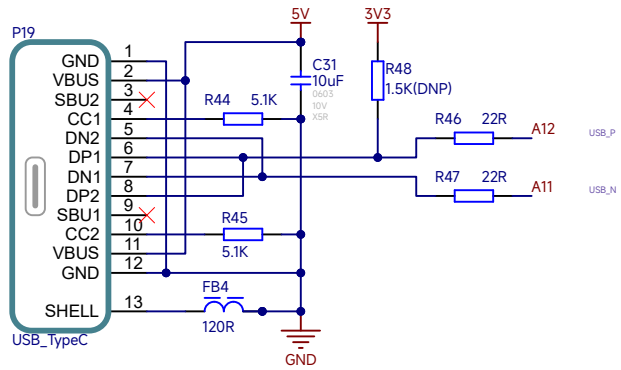


Title: PLUS-F5270

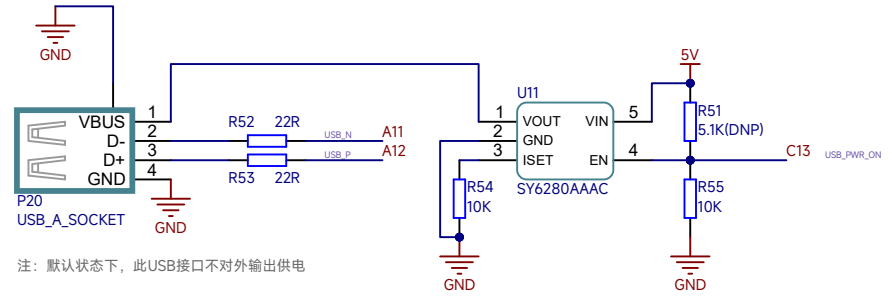
Subtitle: Ethernet

Revision: V1.2.1.6

## USB接口 USB Interface

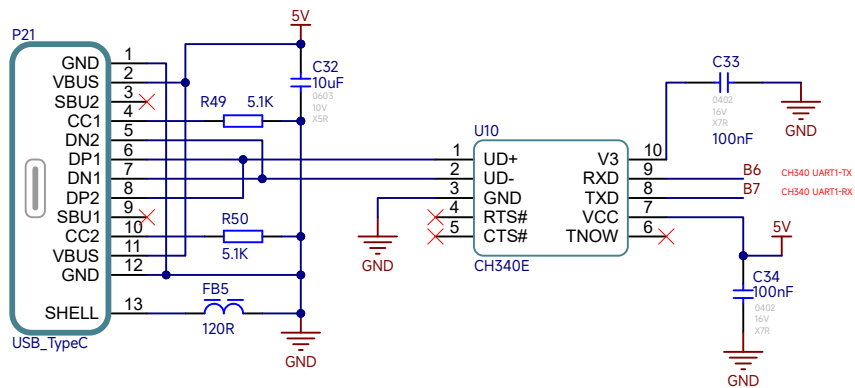


## USB Type-A 接口 USB Type-A Interface



注：默认状态下，此USB接口不对外输出供电

## 板载USB转UART Onboard USB to UART



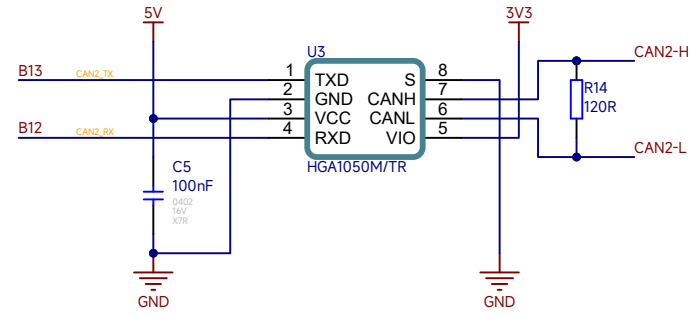
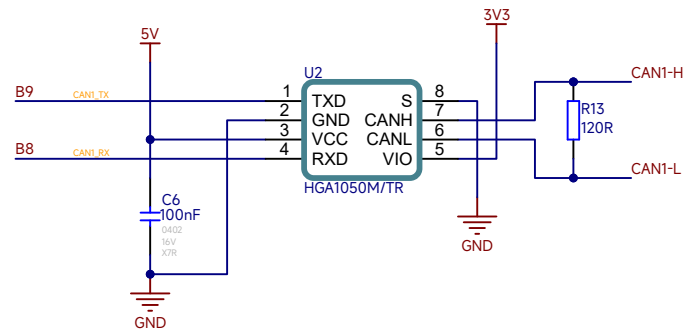
Title: PLUS-F5270

Subtitle: USB

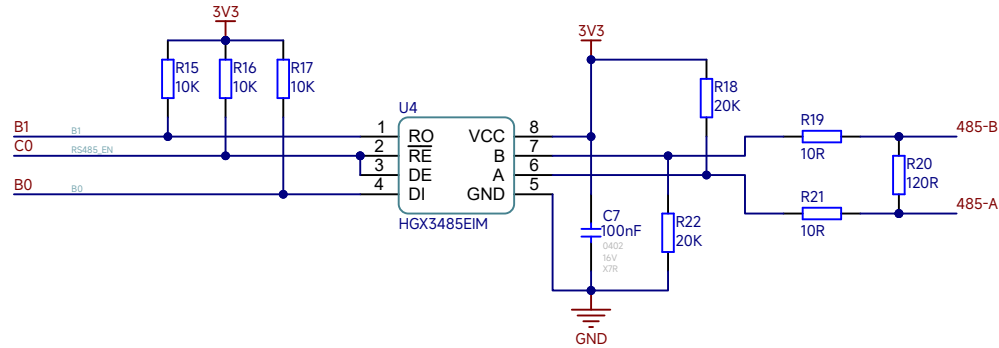
Revision: V1.2.1.6



# CAN



# RS485

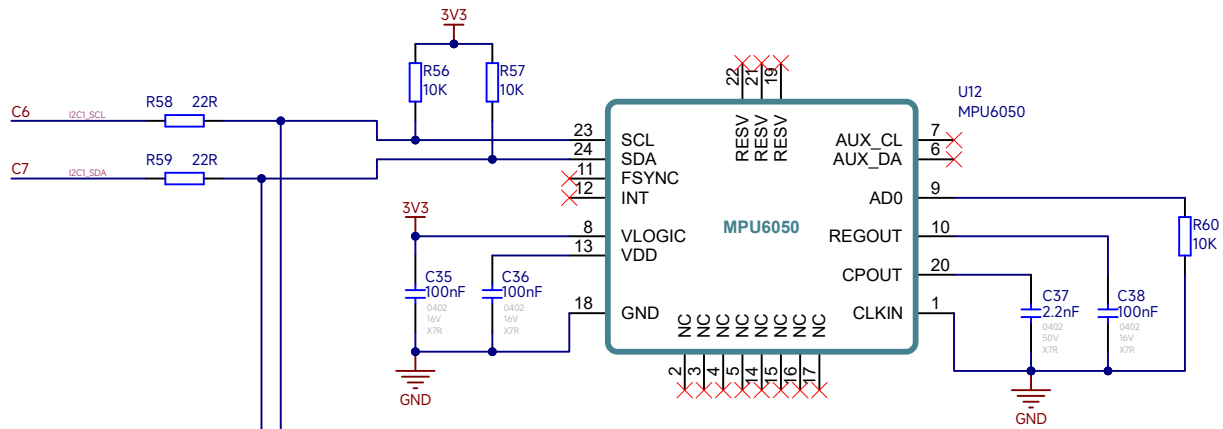


Title: PLUS-F5270

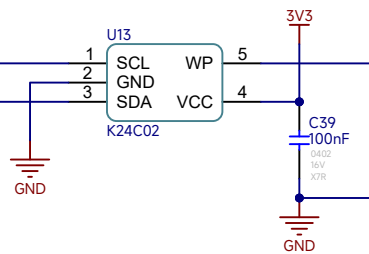
Subtitle: CAN&RS485

Revision: V1.2.1.6

# MPU6050



# K24C02



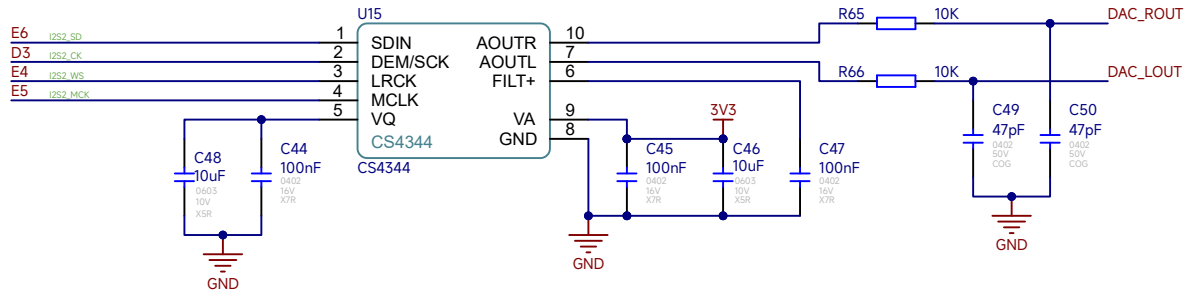
Title: PLUS-F5270

Subtitle: I2C

Revision: V1.2.1.6

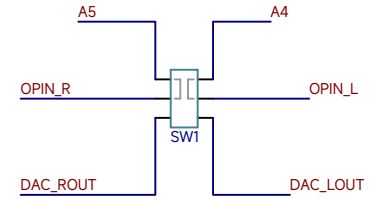


# CODEC



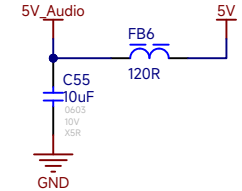
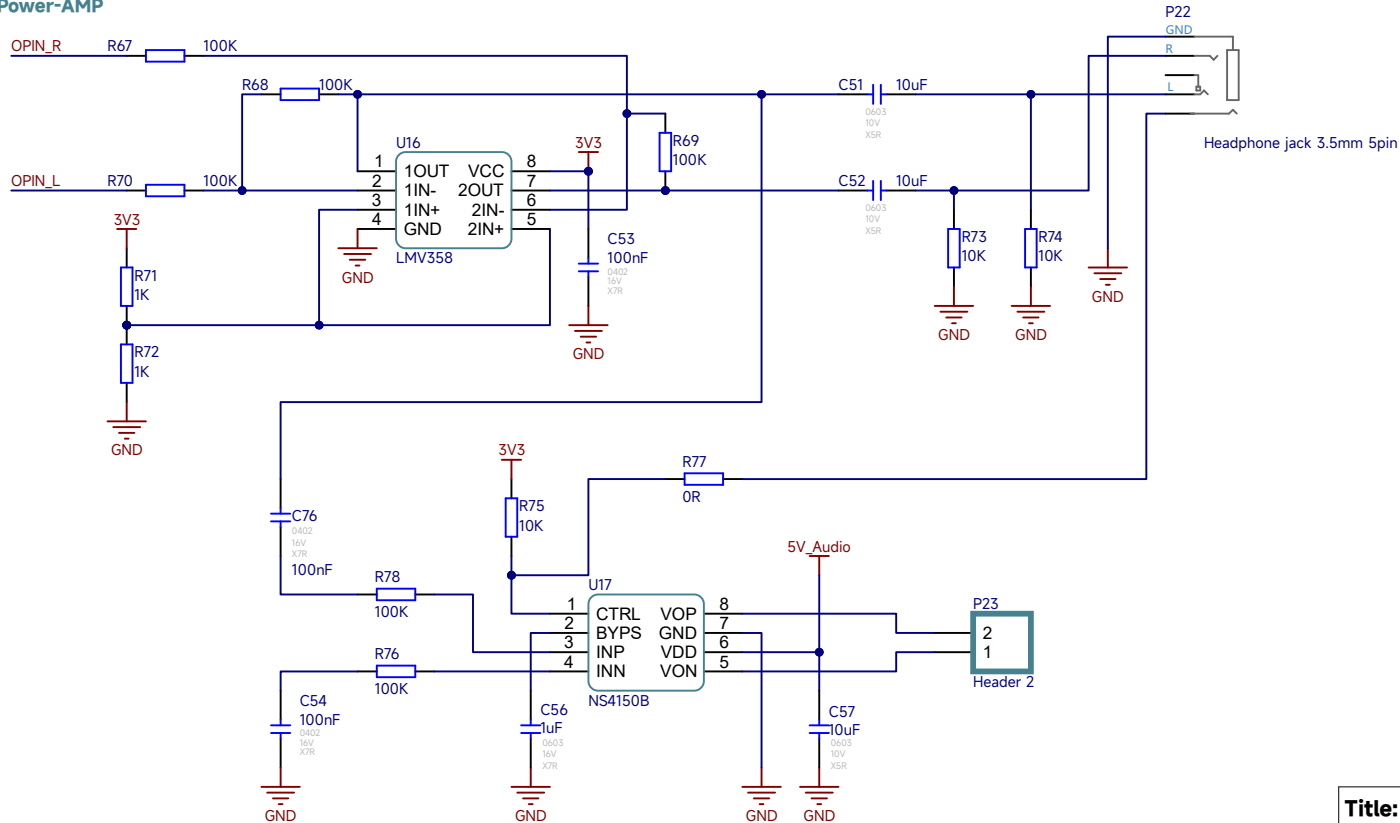
# CS4344/片内DAC切换开关

CS4344 / MCU-DAC switch



# 运放及功放

Op-AMP and Power-AMP

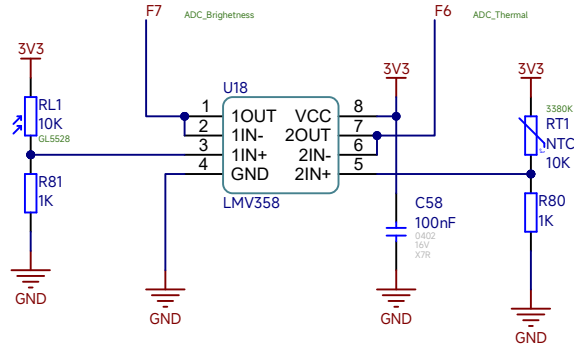


Title: PLUS-F5270

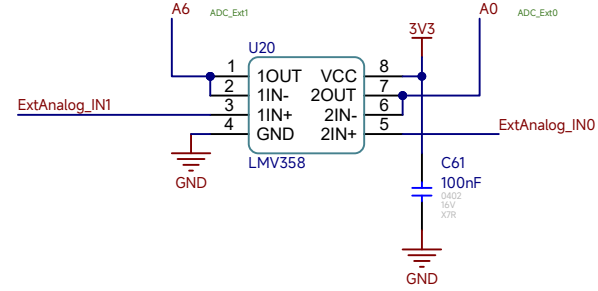
Subtitle: Audio

Revision: V1.2.1.6

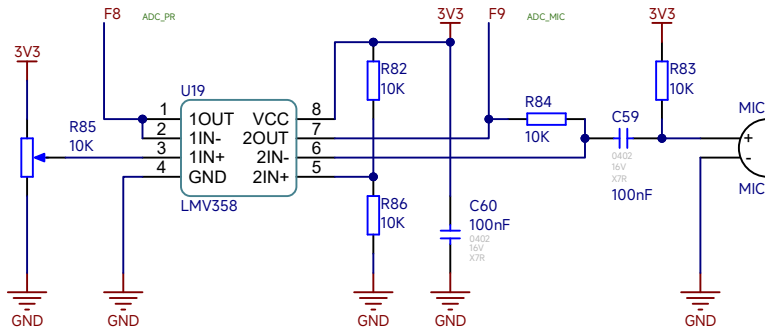
## 光敏电阻&温敏电阻 Photoresistors & Thermistors



## 外部模拟量放大电路 External analog amplifier circuit



## 麦克风&电位器 Microphone & Potentiometer

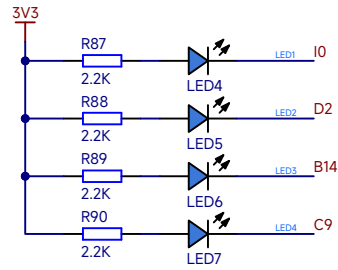


Title: PLUS-F5270

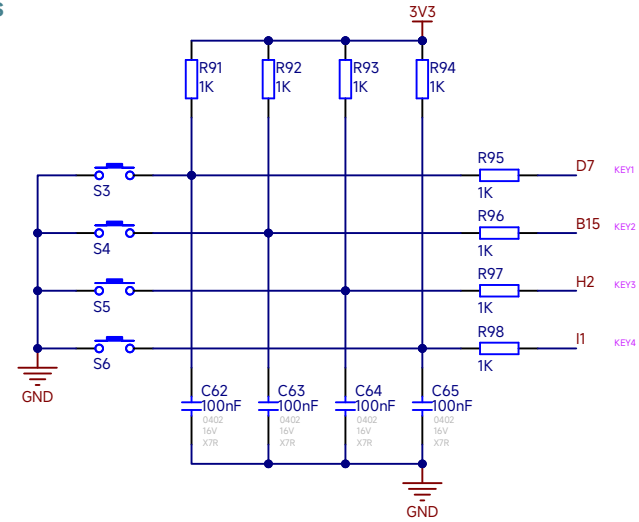
Subtitle: ADC

Revision: V1.2.1.6

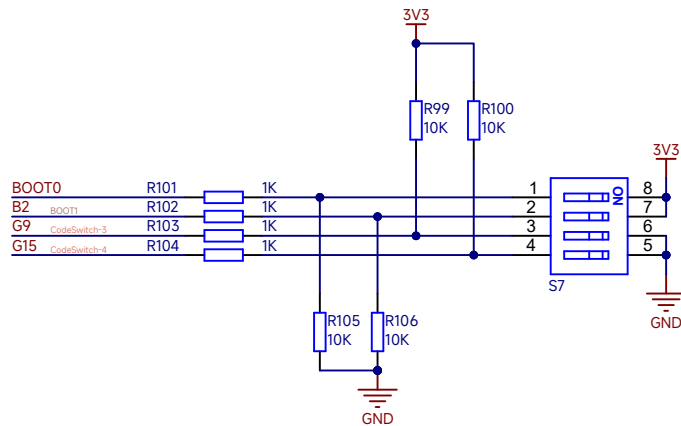
## GPIO LED



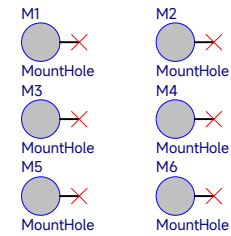
## GPIO 按键 GPIO KEYS



## 拨码开关 DIP Switches



## 固定孔 Mount holes



Title: PLUS-F5270

Subtitle: MISC

Revision: V1.2.1.6